




**Legenda:**

**R:** Rotacional  
**AR:** Anti-Rotacional  
**MF:** Moldeira Fechada  
**MA:** Moldeira Aberta

# LockFit GM

Compatível com a linha \*Grand Morse®

**LockFit**  
 componentes protéticos



  
 sac@healtech.com.br (51) 996031166 0800 649 1020
**CICATRIZADORES**
 Cicatrizador LockFit GM  
 H 0.8 mm  
 CI.HI.00002-T

 Cicatrizador LockFit GM  
 H 1.5 mm  
 CI.HI.00004-T

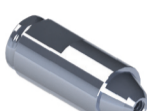
 Cicatrizador LockFit GM  
 H 2.5 mm  
 CI.HI.00006-T

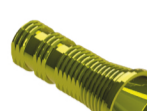
 Cicatrizador LockFit GM  
 H 3.5 mm  
 CI.HI.00008-T

 Cicatrizador LockFit GM  
 H 4.5 mm  
 CI.HI.00010-T

 Cicatrizador LockFit GM  
 H 5.5 mm  
 CI.HI.00012-T
**ANÁLOGOS**
 Análogo Híbrido  
 Lockfit GM  
 AN.LGM.001.00

 análogo híbrido do  
 mini pilar universal  
 AN.MP.0002

 análogo híbrido  
 do micro pilar  
 AN.MC.00002
**FLUXO DIGITAL - MINI PILAR**
 Análogo Digital  
 de Mini Pilar  
 AN.MP.0000-D

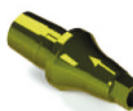
 ScanBody  
 de Mini Pilar  
 SB.MP.0000

 Cilindro de Mini Pilar  
 TiBase  
 IN.MP.00004-T
**TRANSFERENTES**
 Transfer LockFit GM - MA  
 TR.HI.5702-MA

 transfer mini pilar  
 universal MA R  
 TR.MP.0002-MA

 transfer mini pilar  
 universal MF R  
 TR.MP.0004-MF

 transfer do micro  
 pilar R  
 TR0010
**INTERFACES**
 Interface LockFit GM  
 TiAdapt Anti-rotacional  
 H 0.8 mm  
 IN.HI.45002-T

 Interface LockFit GM  
 TiAdapt Anti-rotacional  
 H 1.5 mm  
 IN.HI.45004-T

 Interface LockFit GM  
 TiAdapt Anti-rotacional  
 H 2.5 mm  
 IN.HI.45006-T

 Interface LockFit GM  
 TiAdapt Anti-rotacional  
 H 3.5 mm  
 IN.HI.45008-T

 Interface LockFit GM  
 TiAdapt Anti-rotacional  
 H 4.5 mm  
 IN.HI.45010-T
**PRÓTESES UNITÁRIAS - UCLAS**
 Ucla Lockfit GM CoCr  
 AR H1.5mm  
 UC.LGM.00015-C

 Ucla Lockfit GM CoCr  
 AR H2.5mm  
 UC.LGM.00025-C

 Ucla Lockfit GM CoCr  
 AR H3.5mm  
 UC.LGM.00035-C

 Ucla LockFit GM  
 AR H1.5mm  
 PL.HI.00020-T

 Ucla LockFit GM  
 AR H2.5mm  
 IN.HI.57042-T
**PONTES E PROTOCOLOS - MINI PILAR**
 Mini Pilar LockFit GM  
 H 0.8 mm  
 MP.HI.00002-T

 Mini Pilar LockFit GM  
 H 1.5 mm  
 MP.HI.00004-T

 Mini Pilar LockFit GM  
 H 2.5 mm  
 MP.HI.00006-T

 Mini Pilar LockFit GM  
 H3.5mm  
 MP.HI.00008-T
**USE COM**
 Cilindro de proteção  
 para mini pilar universal  
 CL.UN.00012-T

 Cilindro calcinável para  
 mini pilar universal (CoCr)  
 CL.UN.00002-P

 Cilindro para mini  
 pilar universal (titânio)  
 CL.UN.00002-T

 Cilindro de Mini Pilar  
 Dinâmico  
 CL.UN.00002-D
**PONTES E PROTOCOLOS - MICRO PILAR**
 Micro Mini Pilar LockFit  
 GM H 0.8 mm  
 IN.HI.35072-T

 Micro Mini Pilar LockFit  
 GM H 1.5 mm  
 IN.HI.35074-T

 Micro Mini Pilar LockFit  
 GM H 2.5 mm  
 IN.HI.35076-T

 Micro Mini Pilar LockFit  
 GM H 3.5 mm  
 IN.HI.35078-T
**USE COM**
 cilindro de cobalto cromo  
 para micro pilares  
 CL.MC.00002-P

 cilindro de titânio  
 para micro pilar  
 IN.RC.00002-T

## Guia de Consulta Rápida



sac@healtech.com.br



(51) 996031166

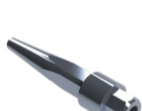


0800 649 1020



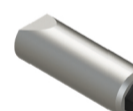
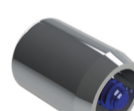
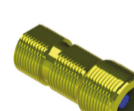
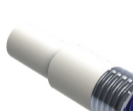
## FAMÍLIA UNIFIT - GM

Compatível com a linha \*Grand Morse®

**ANÁLOGOS**
 Análogo Híbrido  
 UniFit  
 AN.UNF.001.00

 Análogo Fluxo  
 Digital UniFit  
 AN.UNF.001.00

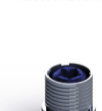
 Transfer Moldeira  
 Aberta UniFit  
 TR.OI.6502-MA

 Transfer Moldeira  
 Fechada UniFit  
 TR.OI.6510-MF
**SCAN BODY**
 Scan Body  
 UniFit H6,5mm  
 SB.UF.40.065

 Scan Body  
 UniFit H12mm  
 SB.UF.40.120
**CILINDROS**
 Cilindro de  
 Proteção  
 CL.UF.00006-T

 Cilindro UniFit  
 Anti Rotacional  
 CL.UF.00002-T

 Cilindro Calcinável  
 UniFit  
 CL.UNF.010.00-C
**CILINDROS DINÂMICOS UNIFIT**

FLUXO CONVENCIONAL

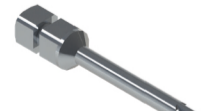

 Cilindro Dinâmico  
 UniFit  
 CL.UNF.012.00-D

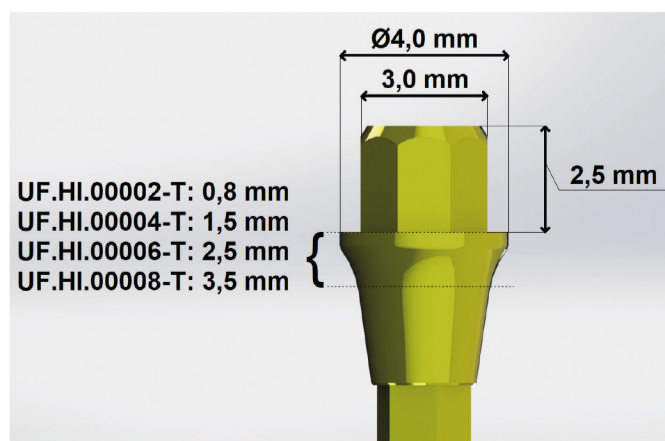
FLUXO DIGITAL


 Cilindro Dinâmico  
 UniFit  
 CL.UNF.012.00-D
**PARAFUSO DINÂMICO UNIFIT**
 Parafuso Dinâmico  
 UniFit  
 PR.PM16.LAS-45
**PILARES**
 Pilar UniFit GM  
 H0.8mm  
 UF.HI.00002-T

 Pilar UniFit GM  
 H1.5mm  
 UF.HI.00004-T

 Pilar UniFit GM  
 H2.5mm  
 UF.HI.00006-T

 Pilar UniFit GM  
 H3.5mm  
 UF.HI.00008-T
**PARAFUSO CILINDROS UNIFIT**
 UniFit Parafuso  
 Protético  
 PR.PM16.LAS-30
**CHAVES PILAR UNIFIT**
 Chave UniFit Cruz h28mm  
 CH.UF.00.28

 Chave UniFit Cruz h20mm  
 CH.UF.00.20
**CHAVE CILINDROS UNIFIT**
 Chave Torque  
 Curta e longa Star  
 CH.TC.STAR - CH.TL.STAR
**CHAVE DINÂMICA LOCKFIT**
 Chave Torquímetro Star LF  
 Abaulada 20.0mm e 28.00mm T5  
 CH.TQ.200SLF5A - CH.TQ.280SLF5A


\*marca registrada pertencente a um terceiro, não relacionada a HealTech LTDA-ME